

LSA-100

Linear Straight Actuator – Multiple Locating Device Capable

Rigid

A wide stance, permanently lubricated bearing and a 2.0" hardened steel uni-shaft assures deflections of less than 0.0005" in typical applications. Ceramic bearing technology combined with CNC precision results in RapStop™, a system integral to every unit. RapStop™ replaces external stops and RAP couplings while it maintains Z-Axis accuracy to ± 0.050 mm.

Rugged

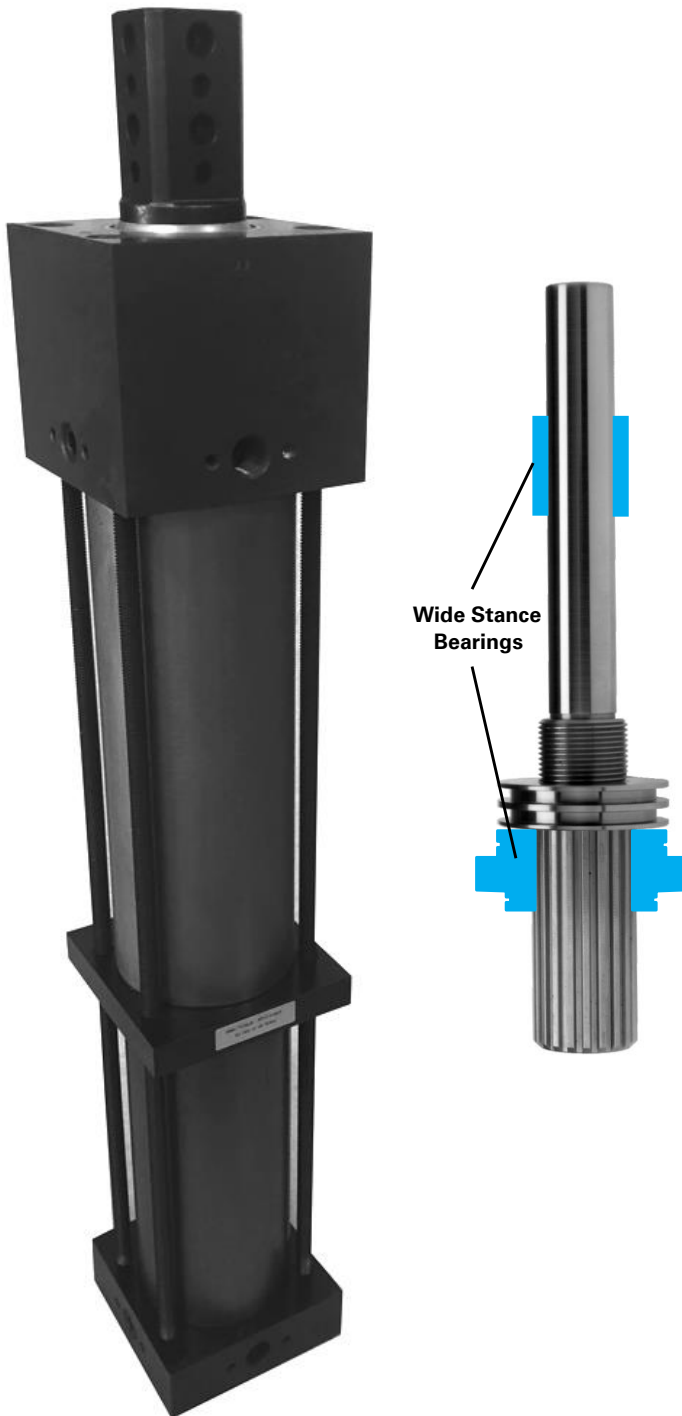
The weld immune, non-stick, anti-gauling treatment on the hardened shaft combined with the ultimate in dual rod scrapers assures long life in the toughest environments. Lubrication for life assures resistance to air supply contamination as well.

Compact

The smallest size in the industry, the LSA is easy to fit into most applications. The small size is achieved by using the unique wide stance bearing system and a less than 5 minute spline.

Easy to Apply

All mounting surfaces and proximity mounts comply with industry standards. A bronze anti-weld slag wiper in a non-conductive mount requires no insulation option. Either pneumatic or hydraulic actuation is accommodated. Approved by Chrysler, Ford and General Motors. No orifices or other restrictions should be used in the application of Zaytran LSAs.

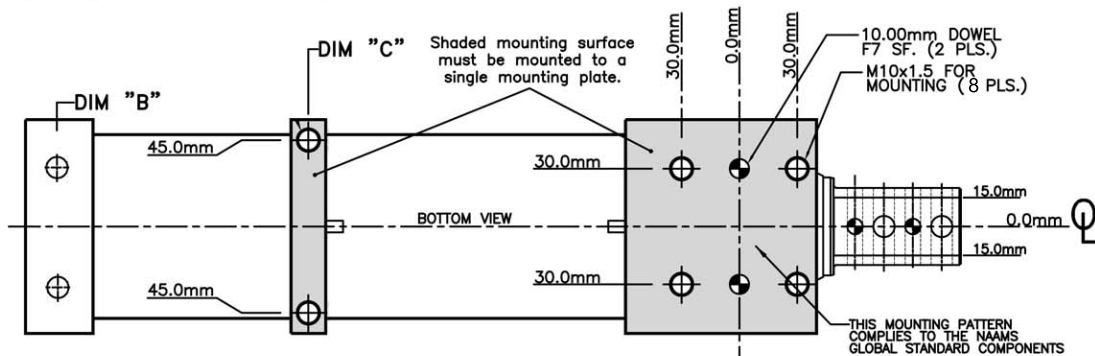
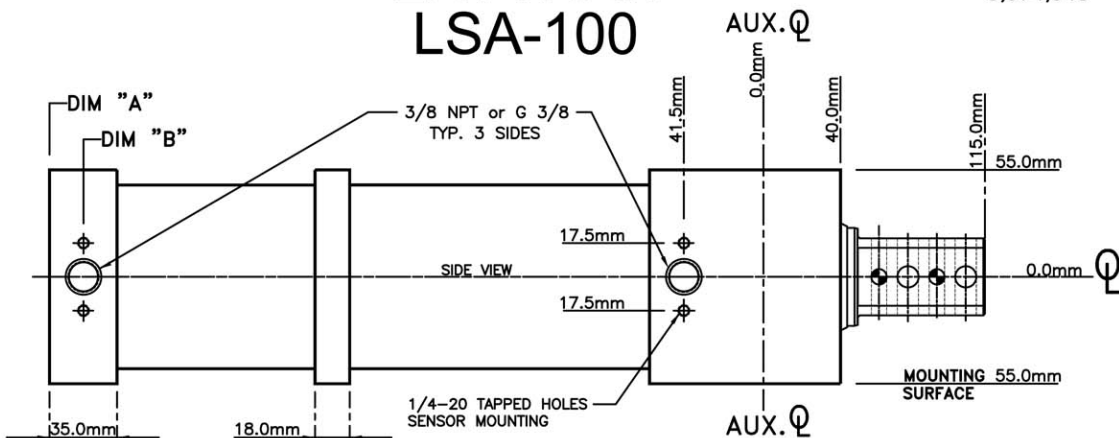


ZAYTRAN
AUTOMATION
www.auto-pin.com

Distributed by: **FESTO**
1-800-993-3786
www.festo.com

ZAYTRAN LSA-100

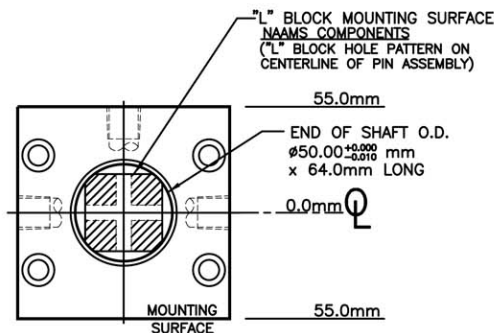
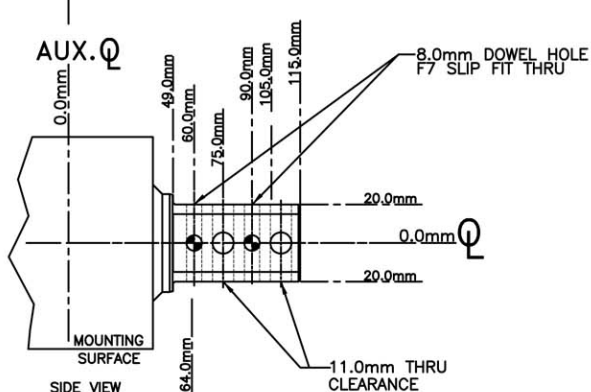
Larger than
NAAMS Global Standard
For Heavier Duty Use



PIN MOUNTING

SHAFT SHOWN AT RETRACTED POSITION

"L" FLAT POSITION



Model Nomenclature:

LSA-100-(BLANK or G)-(STROKE)-(L)

Examples: LSA-100-G-50-L
LSA-100-50-L

Utilizes Standard 1.025" Cylindicators

The use of orifices or restrictors is not recommended.

STROKE	DIM "A"	DIM "B"	DIM "C"
25mm & 50mm	271.00mm	254.00mm	173.50mm
75mm & 100mm	371.00mm	354.00mm	223.50mm
125mm & 150mm	471.00mm	454.00mm	273.50mm
175mm & 200mm	571.00mm	554.00mm	323.50mm
250mm	671.00mm	654.00mm	373.50mm

Stroke	25, 50, 75, 100, 125, 150, 175 & 200mm
Bore Diameter	83mm
Maximum Pressure	69 BAR (1000 PSI)
Actuation	Hydraulic or Pneumatic
25/50 mm of Stroke	Weight of Pin Assembly 22.4 lbs (10.2 kg)
75/100 mm of Stroke	28.4 lbs (12.9 kg)
125/150 mm of Stroke	39.7 lbs (18.0 kg)
175/200 mm of Stroke	47.0 lbs (21.4 kg)
250 mm of Stroke	56.0 lbs (25.5 kg)

PSI	FORCE (pounds)	
	EXTEND	RETRACT
100	830	520
95	790	490
90	750	460
85	710	440
80	660	410
75	620	390
70	580	360
65	540	340
60	500	310