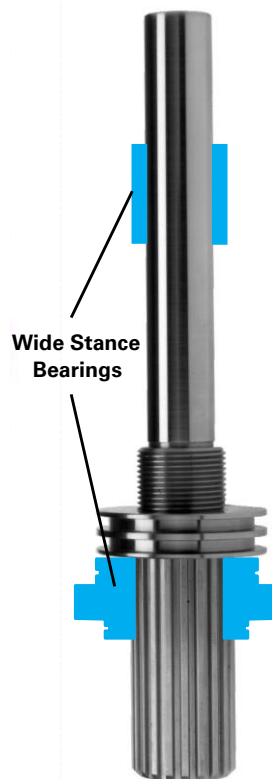


LSA-80

Linear Straight Actuator – Multiple Locating Device Capable



Rigid

A wide stance, permanently lubricated bearing and a 1.5" hardened steel uni-shaft assures deflections of less than 0.0005" in typical applications. Ceramic bearing technology combined with CNC precision results in RapStop™, a system integral to every unit. RapStop™ replaces external stops and RAP couplings while it maintains Z-Axis accuracy to ± 0.050 mm.

Rugged

The weld immune, non-stick, anti-gauling treatment on the hardened shaft combined with the ultimate in dual rod scrapers assures long life in the toughest environments. Lubrication for life assures resistance to air supply contamination as well.

Compact

The smallest size in the industry, the LSA is easy to fit into most applications. The small size is achieved by using the unique wide stance bearing system and a less than 5 minute spline.

Easy to Apply

All mounting surfaces and proximity mounts comply with industry standards. A bronze anti-weld slag wiper in a non-conductive mount requires no insulation option. Either pneumatic or hydraulic actuation is accommodated. Approved by Chrysler, Ford and General Motors. No orifices or other restrictions should be used in the application of Zaytran LSAs.

ZAYTRAN
AUTOMATION
www.auto-pin.com

Distributed by: **FESTO**
1-800-993-3786
www.festo.com

ZAYTRAN LSA-80

Model Nomenclature:

LSA-80-[Port Type]-[Stroke]-L

Port Type: BLANK= NPT, G= G Class

Stroke: 25, 50, 75, 100 mm

Example:

LSA-80-G-25-L

Standards:

NAAMS Global Standard - Retractable Locating Pin Package

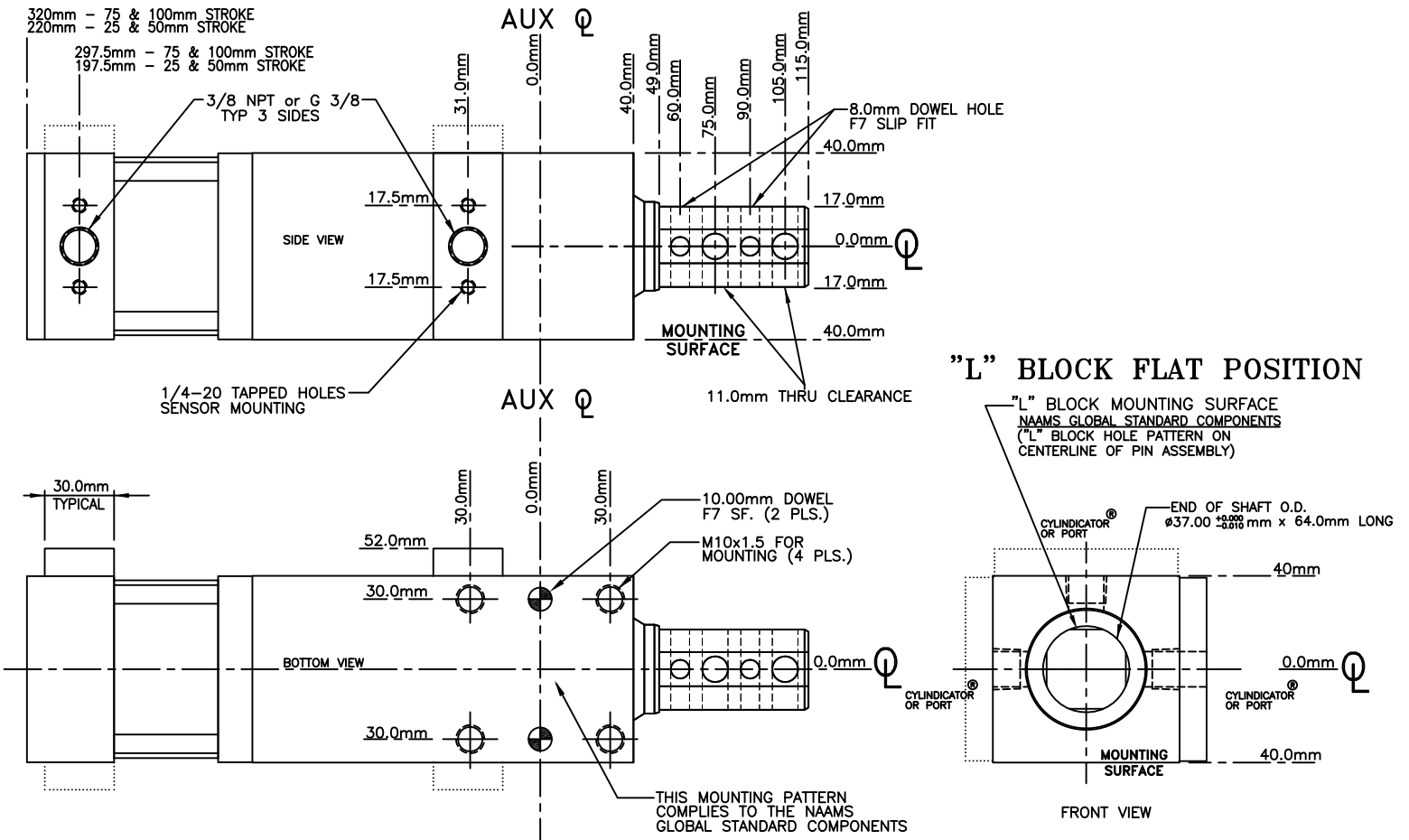
Equivalent Bore Dia.: 70mm

Max Pressure: 35 BAR (500PSI)

Weight: 6.5KG - 25 or 50mm Stroke, 8.0KG - 75 and 100mm Stroke

Sensor: Customer Supplied 1.025" Cylinders

The use of orifices or restrictors is not recommended.



PSI	FORCE (pounds)	
	EXTEND	RETRACT
100	594	417
95	564	396
90	535	376
85	505	355

PSI	FORCE (pounds)	
	EXTEND	RETRACT
80	475	334
75	445	313
70	416	292
65	386	271
60	356	250