

# LSA-85

Linear Straight Actuator  
Multiple Locating Device Capable



Industry Standard  
Off Set Loads / NC blocks  
World Clamp Sensor

## Rigid and Precise

The LSA-85 uses a ceramic Circle-D bearing system that provides absolute rigidity with a long circle or round bearing to combat deflection, and a “D” bearing block to counter rotation. The “D” shape has no square corners to bind. This technology combined with CNC precision results in RapStop™, a system integral to every unit. RapStop™ replaces external stops and RAP couplings while it maintains Z-Axis accuracy to  $\pm 0.050$  mm. Tested with over 3,000,000 cycles and a 75mm offset 24kg load, the LSA-85 demonstrated less deflection than any commercially available locating pin and complies with every auto maker’s requirements.

## Easy to Apply

The LSA-85 is symmetrical and has an extremely low profile to fit anywhere and stay out of the way of weld guns and other tooling. World standard sensors are employed to simplify controls integration. A bronze anti-weld slag wiper in a non-conductive mount requires no insulation option. The LSA-85 uses 100% NAAMS standard mounting patterns to assure easy design and assembly on the line. No orifices or other restrictions should be used in the application of Zaytran LSAs.

## Weld Immune

The LSA-85 uses the double bronze wiper that has protected tens of thousands of LSA units in automotive factories all over the globe. This system aggressively removes any weld slag from the heat treated shaft.

## Maintenance Free

The LSA-85 is guaranteed for the life of the tool (with design sign-off). There are no seals or plastic scrapers to change, no covers with pinch points, and no requirement to lubricate the unit.

**ZAYTRAN**  
AUTOMATION  
[www.auto-pin.com](http://www.auto-pin.com)

Distributed by: **FESTO**  
1-800-993-3786

# ZAYTRAN LSA-85

Model Nomenclature:

LSA-85-XX-YY-ZZ-R

XX Ports: N (NPT) or G (G-Class)

YY Stroke: 25 (25mm) or 50 (50mm)

ZZ Sensing: SEN (P&F Sensing), SEN-TRK (Turck Sensing) or NS (No Sensing)

R Reverse: Blank (Retract is home position) or R (Extend is home position)

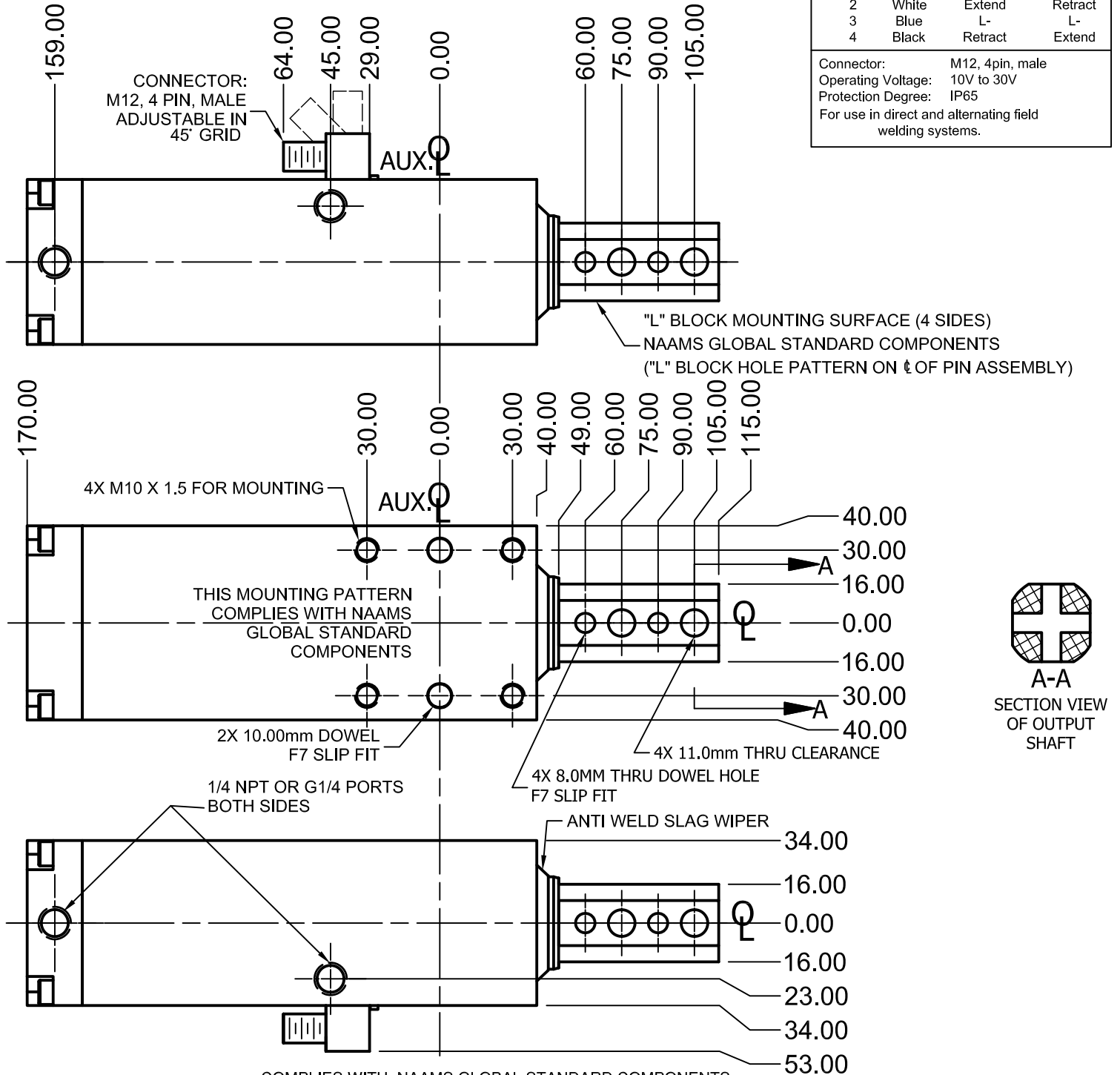
Example: LSA-85-N-50-SEN

LSA-85 with NPT Ports, 50mm of Stroke and P&F Sensing

Stroke: 25mm or 50mm  
 Rap: Not Required  
 Equivalent Bore Dia: 70mm  
 Max. Pressure: 8.2 bar (120 psi)  
 Actuation: Pneumatic  
 Extend Force @ 4.1 bar (60 psi): 161.4kg (356 lbs.)  
 Retract Force @ 4.1 bar (60 psi): 113.4kg (250 lbs.)  
 Assembly Weight: 4kg (8.8 lbs.)

Sensor Information			
Pin	Color	Function	-R Function
1	Brown	L+	L+
2	White	Extend	Retract
3	Blue	L-	L-
4	Black	Retract	Extend

Connector: M12, 4pin, male  
 Operating Voltage: 10V to 30V  
 Protection Degree: IP65  
 For use in direct and alternating field welding systems.



COMPLIES WITH: NAAMS GLOBAL STANDARD COMPONENTS  
 ASSEMBLY CHAPTER P - RETRACTABLE LOCATING PIN PACKAGE