



LSA-95

**Linear Straight Actuator
Multiple Locating Device Capable**

*Eliminates the Need for
Raps and External Stops
Now with Optional Locking*

Rigid and Precise

The LSA-95 uses a ceramic Circle-D bearing system that provides absolute rigidity with a long circle or round bearing to combat deflection, and a “D” bearing block to counter rotation. The “D” shape has no square corners to bind. This technology combined with CNC precision results in RapStop™, a system integral to every unit. RapStop™ replaces external stops and RAP couplings while it maintains Z-Axis accuracy to ± 0.050 mm. Tested with over 3,000,000 cycles and a 75mm offset 24kg load, the LSA-95 demonstrated less deflection than any commercially available locating pin and complies with every auto maker’s requirements.

Powerful

Using the Zaytran “rounded rectangle” bore the LSA-95 exceeds the pull force of the LSA-100 and other locating pins of the same frame size.

Easy to Apply

The LSA-95 is symmetrical and has an low profile to fit anywhere and stay out of the way of weld guns and other tooling. Standard world sensors are employed to simplify controls integration. Dual bronze anti-weld slag wipers in a non-conductive mount requires no insulation option. The LSA-95 uses 100% NAAMS standard mounting patterns to assure easy design and assembly on the line. No orifices or other restrictions should be used in the application of Zaytran LSAs.

Weld Immune

The LSA-95 uses the double bronze wiper that has protected tens of thousands of LSA units in automotive factories all over the globe. This system aggressively removes any weld slag from the heat treated shaft.

Maintenance Free

The LSA-95 is guaranteed for the life of the tool (with design sign-off). There are no seals or plastic scrapers to change, no covers with pinch points, and no requirement to lubricate the unit.

ZAYTRAN
AUTOMATION
www.auto-pin.com

Distributed by: **FESTO**
1-800-993-3786

ZAYTRAN

LSA-95 Short Stroke

Model Nomenclature:

LSA-95-XX-YY-ZZ-R-LL

XX Ports: N (NPT) or G (G-Class)

YY Stroke: 25 (25mm) or 50 (50mm)

ZZ Sensing: SEN (P&F Sensing), SEN-TRK (Turck Sensing) or NS (No Sensing)

R Reverse: Blank (Retract is home position) or R (Extend is home position)

LL Locking: Blank (No Lock) or SL (Spring Lock)

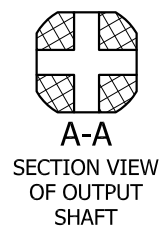
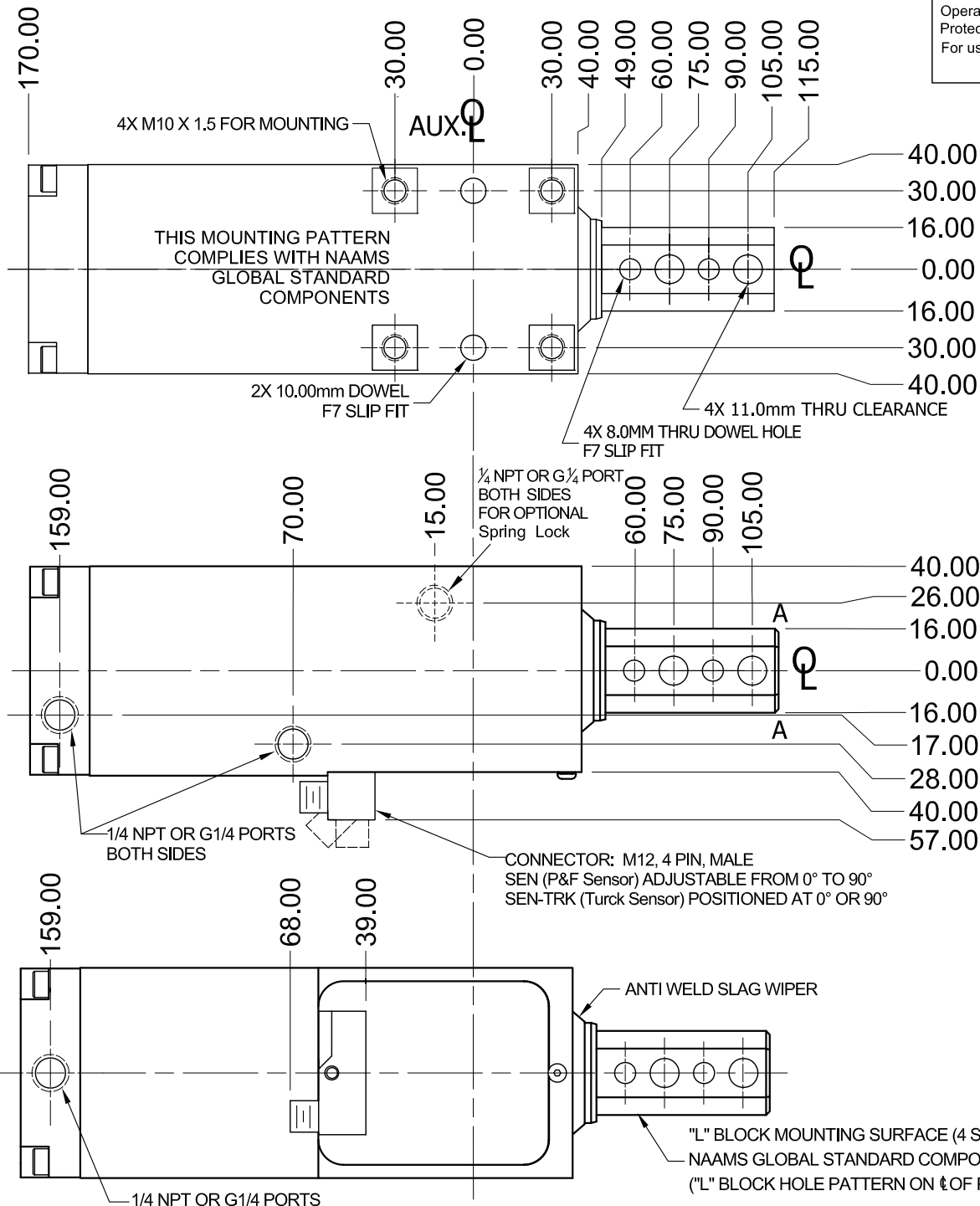
Example: LSA-95-N-50-SEN-SL

LSA-95 with NPT Ports, 50mm of Stroke, P&F Sensing and Spring Lock

Stroke: 25mm or 50mm
 Rap: Not Required
 Equivalent Bore Dia: 77mm
 Max. Pressure: 8.2 bar (120 psi)
 Actuation: Pneumatic
 Extend Force @ 4.1 bar (60 psi): 200kg (436 lbs.)
 Retract Force @ 4.1 bar (60 psi): 150kg (330 lbs.)
 Assembly Weight: 4.35kg (9.6 lbs.)

Sensor Information			
Pin	Color	Function	-R Function
1	Brown	L+	L+
2	White	Extend	Retract
3	Blue	L-	L-
4	Black	Retract	Extend

Connector: M12, 4pin, male
 Operating Voltage: 10V to 30V
 Protection Degree: IP65
 For use in direct and alternating field welding systems.



ZAYTRAN

LSA-95 Long Stroke

Model Nomenclature:
LSA-95-XX-YY-ZZ-R-LL

XX Ports: N (NPT) or G (G-Class)
YY Stroke: 75 (75mm) or 100 (100mm)
ZZ Sensing: SEN (P&F Sensing), SEN-TRK (Turck Sensing) or NS (No Sensing)
R Reverse: Blank (Retract is home position) or R (Extend is home position)
LL Locking: Blank (No Lock) or SL (Spring Lock)
Example: LSA-95-N-75-SEN-SL
LSA-95 with NPT Ports, 75mm of Stroke, P&F Sensing and Spring Lock

Stroke: 75mm or 100mm
Rap: Not Required
Equivalent Bore Dia: 77mm
Max. Pressure: 8.2 bar (120 psi)
Actuation: Pneumatic
Extend Force @ 4.1 bar (60 psi): 200kg (436 lbs.)
Retract Force @ 4.1 bar (60 psi): 150kg (330 lbs.)
Assembly Weight: 6.8kg (15 lbs.)

Sensor Information			
Pin	Color	Function	-R Function
1	Brown	L+	L+
2	White	Extend	Retract
3	Blue	L-	L-
4	Black	Retract	Extend

Connector: M12, 4pin, male
Operating Voltage: 10V to 30V
Protection Degree: IP65
For use in direct and alternating field welding systems.

