

eLSA-95

**Electric Linear Straight Actuator
Multiple Locating Device Capable**



**LSA-95 features
but operates with
24 vdc @ <2 amps.**

Rigid and Precise

The eLSA-95 uses the same bearing, anti-rotation, and weld immune features as the pneumatic LSA-95. In addition, the unit is sealed to meet the rigorous standard of ip67.

Easy to Apply

Using just 2 amps of 24vdc power, this unit “looks” to the controls like a 2 position solenoid valve. Available strokes – 25, 50, 75, and 100mm.

Powerful

The first 6mm of stroke the units pulls (or pushes) with 90KG or 200 pounds of force to assure that the tooling is broken-free from the sheet metal. Throughout the rest of the stroke 45KG or 100 pounds of force is available.

Maintenance Free

The eLSA-95 is guaranteed for the life of the tool (with design sign-off). There are no seals or plastic scrapers to change, no covers with pinch points, and no requirement to lubricate the unit.

ZAYTRAN
AUTOMATION
www.auto-pin.com

Distributed by: **FESTO**
1-800-993-3786

eLSA-95

**Electric Linear Straight Actuator
Multiple Locating Device Capable**

Sensor M12-4 Pin Male Connector

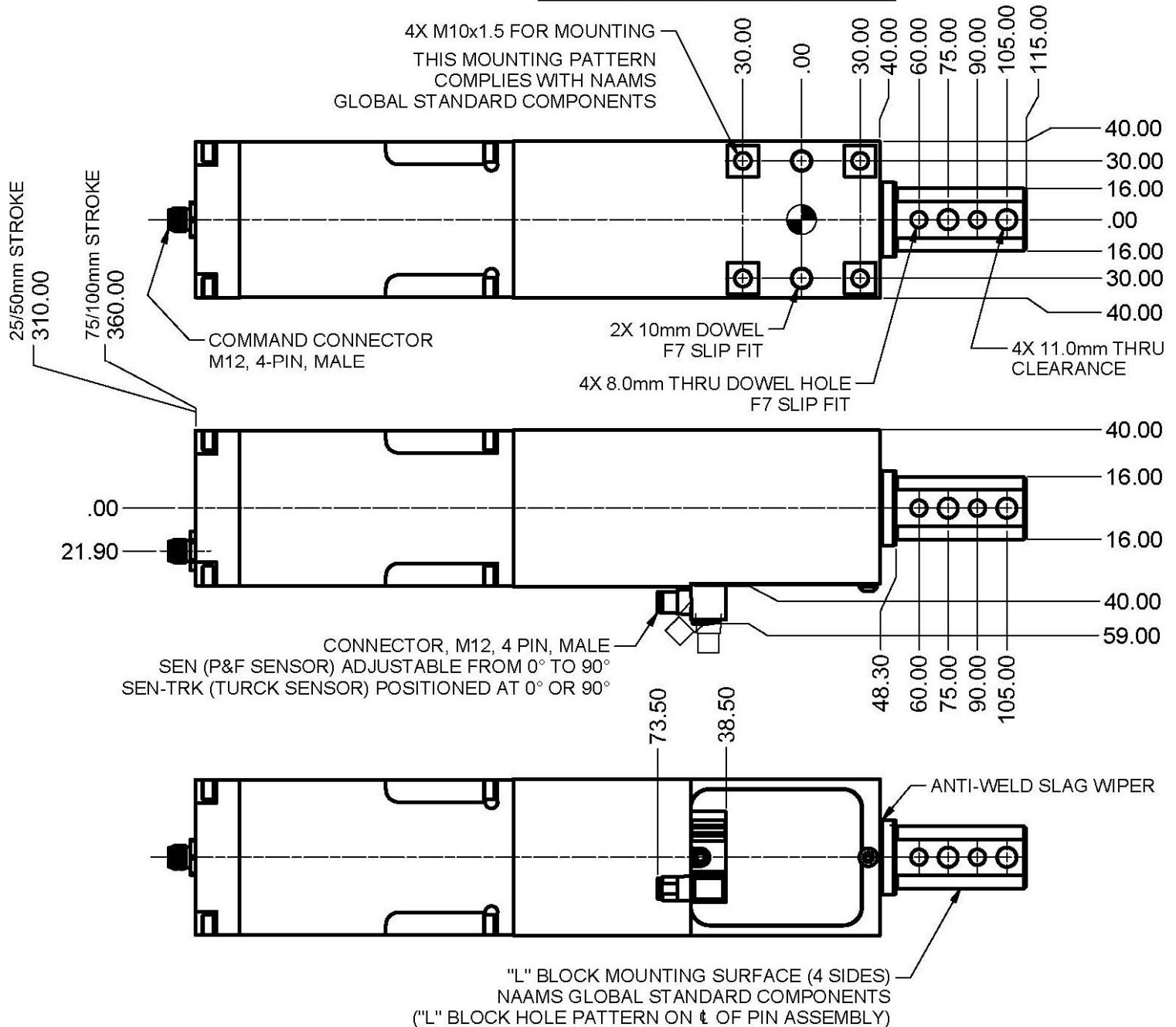
Pin	Color	Standard	R Unit
1	Brown	VDC +	VDC +
2	White	Extended	Retracted
3	Blue	VDC-	VDC-
4	Black	Retracted	Extended

* Upon power-up the first command must be "Retract".

Both Extend and Retract commands must be a 20-200 msec pulse @4 milliamps. Motion will be on the leading edge.

Command M12-4 Pin Male Connector

Pin	Color	Standard	R Unit
1	Brown	24 VDC +	24 VDC +
2	White	Extend*	Retract*
3	Blue	VDC-	VDC-
4	Black	Retract*	Extend*



ZAYTRAN
AUTOMATION
www.auto-pin.com

Distributed by: **FESTO**
1-800-993-3786